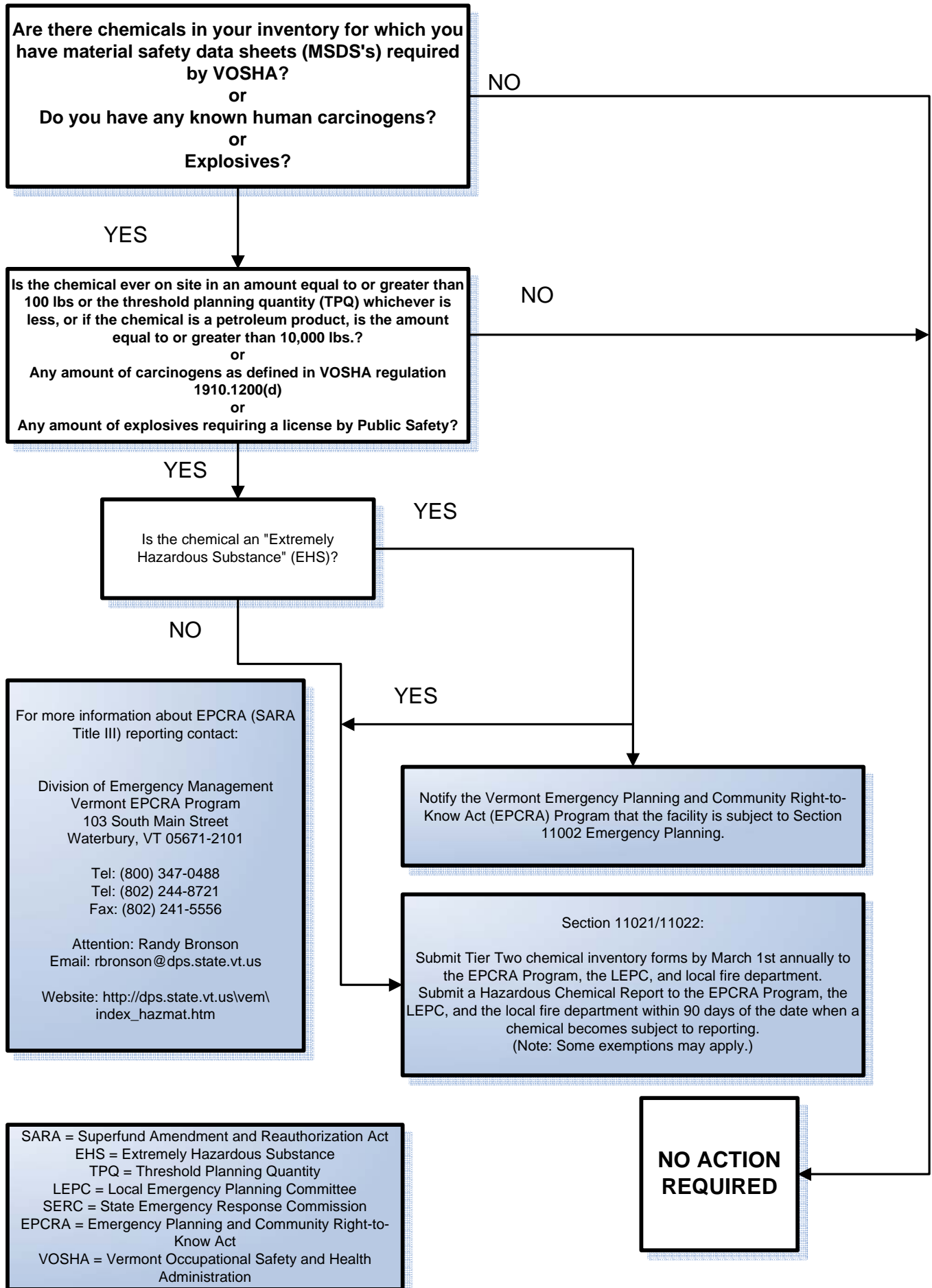


# VERMONT Hazardous Chemical Inventory Reporting Decision Diagram



SARA = Superfund Amendment and Reauthorization Act  
 EHS = Extremely Hazardous Substance  
 TPQ = Threshold Planning Quantity  
 LEPC = Local Emergency Planning Committee  
 SERC = State Emergency Response Commission  
 EPCRA = Emergency Planning and Community Right-to-Know Act  
 VOSHA = Vermont Occupational Safety and Health Administration